

NEWTON SCOTT

COMMERCIAL PROPERTY CONSULTANTS

35 Carlton Crescent • Southampton • Hampshire • SO15 2EW
Telephone: 023 8033 7033 • Email: info@newtonscott.com
Web: www.newtonscott.com

LAST UNIT AVAILABLE
TO LEASE

6 NEW INDUSTRIAL UNITS TO LEASE OR BUY SEPTEMBER 2024



**C1/6 MANOR NURSERIES, STOCKBRIDGE ROAD
TIMSBURY, Nr ROMSEY, HAMPSHIRE SO51 0NB
750 – 4,500 square feet/69.67 - 418.06 square metres**

LOCATION

Located on the A3057 Stockbridge Road, situated in the heart of Timsbury, and being close to both Bunny Lane and Yokesford Hill, just two miles north of the thriving market town of Romsey.

Junction 3 of the M27 motorway is just a fifteen-minute drive time allowing swift access to the wider Solent Region and further afield via the national motorway network.

Southampton Airport and Eastleigh Parkway mainline railway station are located off Junction 5 of the M27 - approximately a 20-minute drive time. The closest railway station to the development is Romsey.

DESCRIPTION

These compact industrial units provide an efficient combination of storage, office space and workspace. With each unit benefitting from a 250 sq ft mezzanine these impressive units are ideal for anyone who requires cost-effective accommodation in an easily accessible rural location.

Approached via their own access road and situated to the rear of the long established and busy Manor Nurseries, these units will be completed by mid June.

They have been designed of steel portal frame, beneath an insulated and profiled steel roof, incorporating a generous number of natural daylighting panels, together with insulated profiled clad walls. The minimum eaves height is approximately 3.4 metres (11'2"). Additionally, each unit will have an up-and-over full height loading door, incorporating a personnel door. Each unit benefits from a private toilet and three phase electrics, in addition to a generous level of parking for both staff and visitors.

FLOOR AREAS

Ground floor: 500 sq. feet (46.5 sq. metres)

Mezzanine floor: 250 sq. feet (23.2 sq metres)

Total floor area: 750 sq. feet /69.7 aq metres

All floor areas are approximate and have been measured off plans in accordance with RICS Code of Practice on a gross internal basis.

TERMS

Lease: A new lease will be offered for a term of three or six years on a full repairing and insuring basis.

Rent: £12,000 per annum exclusive plus VAT payable quarterly in advance. There will be an upward only rent review due at the end of the third year.

TERMS CONTINUED

Alternatively:

Price: £195,000 per unit plus VAT for a long leasehold interest (999 years) subject to an annual peppercorn rent.

Rates: Yet to be assessed. It is understood that most occupiers will benefit from Rate Relief, in some cases as much as 100%. Occupiers are advised to make their own enquiries for verification purposes for Test Valley Borough Council – tel: 01264 368000 or: Voa.org.uk

EPC: **Energy Performance Certificate Rating: C-56**

Occupation: Anticipated - Mid June 2024

Legal Costs: Each party will be responsible for their own legal expenses.

ANTI MONEY LAUNDERING

Under the Anti-Money Laundering (Amendment) Act 2017 we are required to verify the identity of any proposed purchaser prior to instructing solicitors. This is to help combat fraud and money laundering and the requirements are contained in statute.

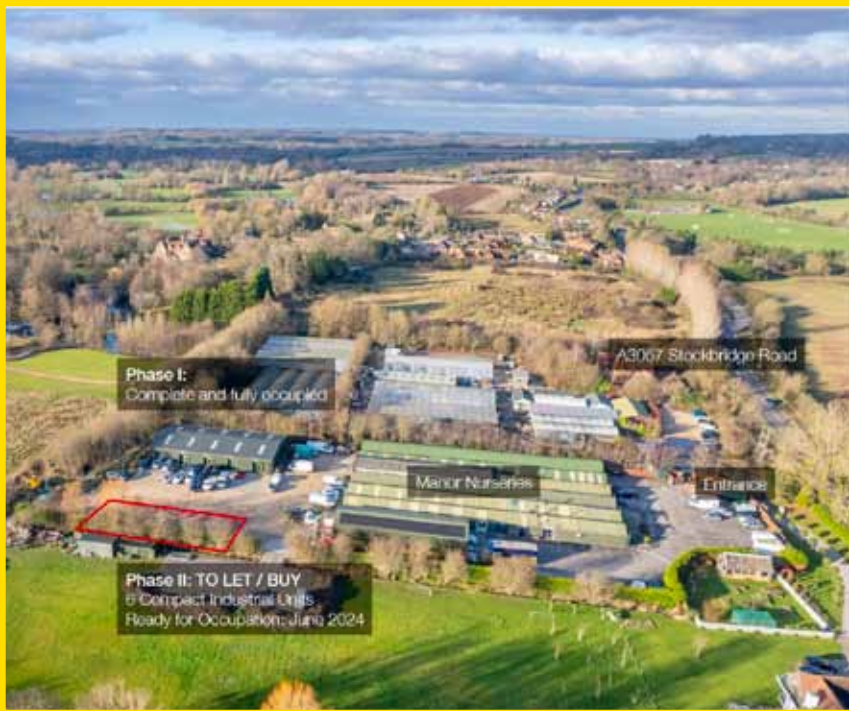
VIEWING

Strictly by appointment with the sole agents, Newton Scott, tel: 023 8033 7033.

**NEWTON
SCOTT**

COMMERCIAL PROPERTY AGENTS

35 Carlton Crescent • Southampton • Hampshire • SO15 2EW
Telephone: 023 8033 7033 • Email: info@newtonscott.com
Web: www.newtonscott.com



Distances & Drive Times

M27
5.5 miles, 12 minutes.

Eastleigh
8.5 miles, 20 minutes.

Stockbridge
8.5 miles, 14 minutes.

Southampton
10.5 miles, 24 minutes.

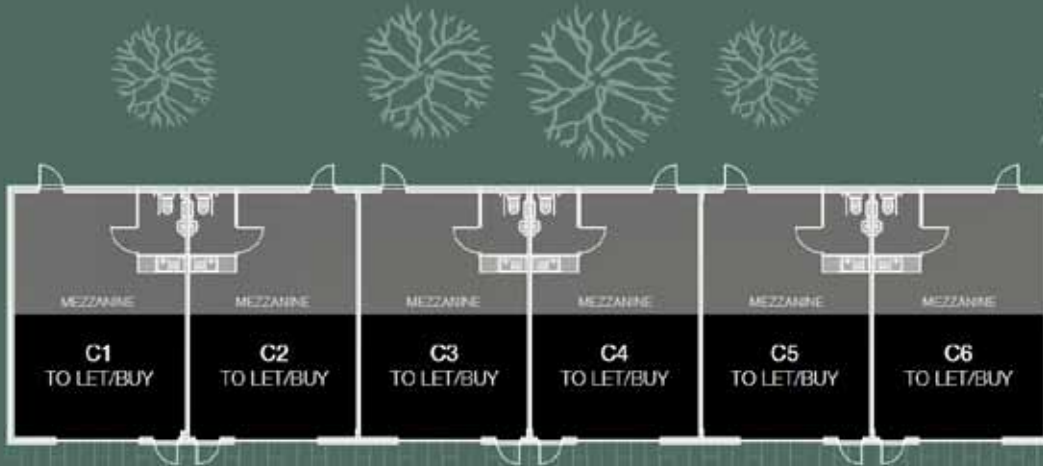
Southampton Airport
11.5 miles, 21 minutes.

Winchester
13 miles, 24 minutes.

Andover
16.5 miles, 28 minutes.

Salisbury
17.5 miles, 32 minutes.

Sat Nav Postcode
SO51 0NB



CODE OF PRACTICE FOR COMMERCIAL LEASES IN ENGLAND & WALES
The landlord has regard to the recommendations of the voluntary code of practice for commercial leases in England & Wales. If you are professionally represented, you should ask your adviser for a copy. Alternatively, the document can be found at www.commercialleasecode.co.uk or obtained from the Royal Institution of Chartered Surveyors, telephone number 020 7334 3806.

Misrepresentation Act 1967: Newton Scott Commercial Property Agents, for themselves and for the Vendor, Lessor or Landlord of this property for whom they act, give notice that:

1. These particulars have been produced in good faith and are a general outline only for the guidance of prospective purchasers or lessees and do not constitute the whole or any part of an offer or contract.
2. Newton Scott Commercial Property Agents cannot guarantee the accuracy of any description, dimension, reference to condition or necessary permissions for the use and/or occupation and other details contained herein. Prospective purchasers or lessees must not rely on them as statements of fact or representations.
3. The reference to any plant, machinery, equipment, services fixtures or fittings at the property shall not constitute a representation, unless otherwise stated, as to its state or condition or that it is capable of fulfilling its intended function. Prospective purchasers/tenants should satisfy themselves as to the accuracy, correctness and fitness of such items for their requirements by inspection or otherwise.
4. No person in the employment of Newton Scott Commercial Property Agents has any authority to make or give any representation or warranty whatever in relation to this property. Newton Scott Limited are not to be liable, in negligence or otherwise, for loss arising from the use of these particulars.

Property Misdescriptions Act 1991: Newton Scott Commercial Property Agents has not tested any of the service installations, including heating, lighting and any occupier must satisfy themselves as to the state and condition of such items. Any occupier must check the stated planning use with the relevant Planning Office to ensure that it is compatible for their intended use. All rents, prices, premiums and service charges may be subject to VAT in addition (unless otherwise stated).

**NEWTON
SCOTT**

COMMERCIAL PROPERTY AGENTS

35 Carlton Crescent • Southampton • Hampshire • SO15 2EW
Telephone: 023 8033 7033 • Email: info@newtonscott.com
Web: www.newtonscott.com



Photo taken July 2024



Photo taken July 2024